

SKIPPY

Länge über alles: 3.8m
Länge Rumpf 2.45m
Breite Rumpf: 1.05m
Tiefgang: 0.6m

Segelfläche: 3.8m² (+1.2m²)

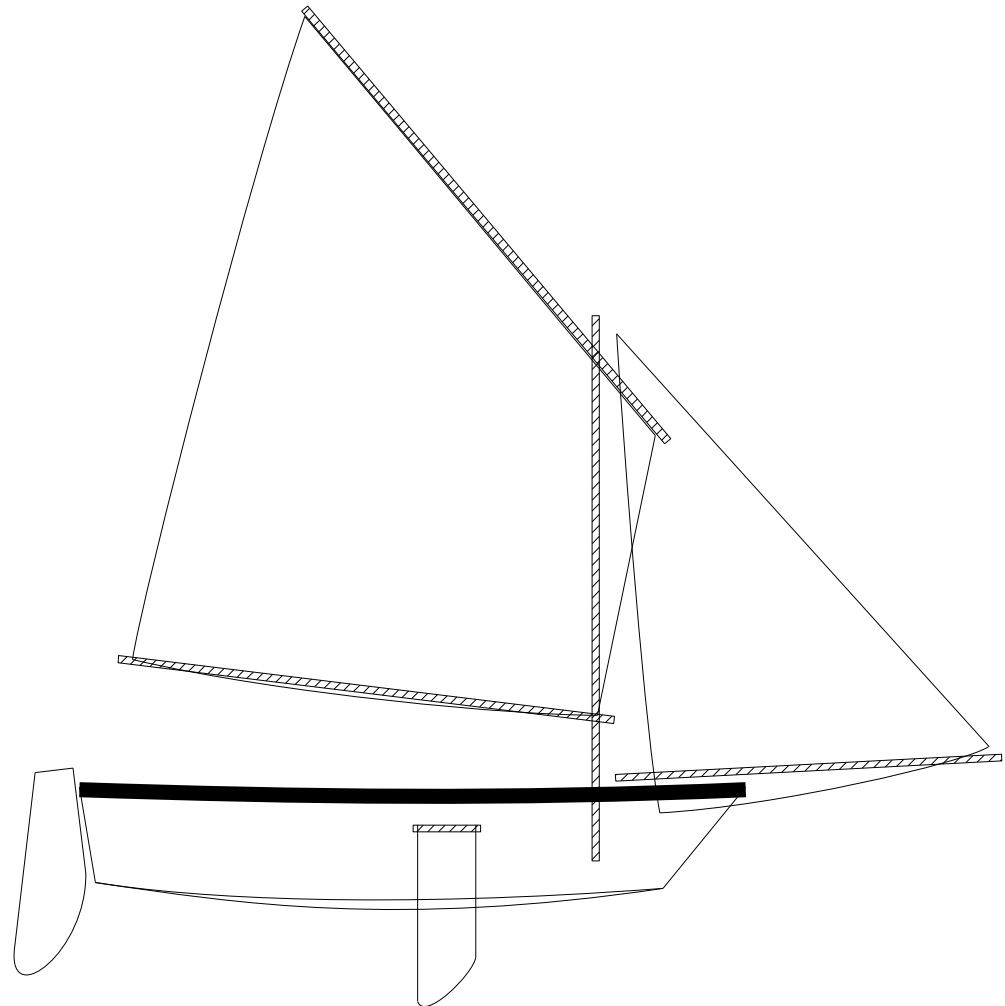
Version: 1.14

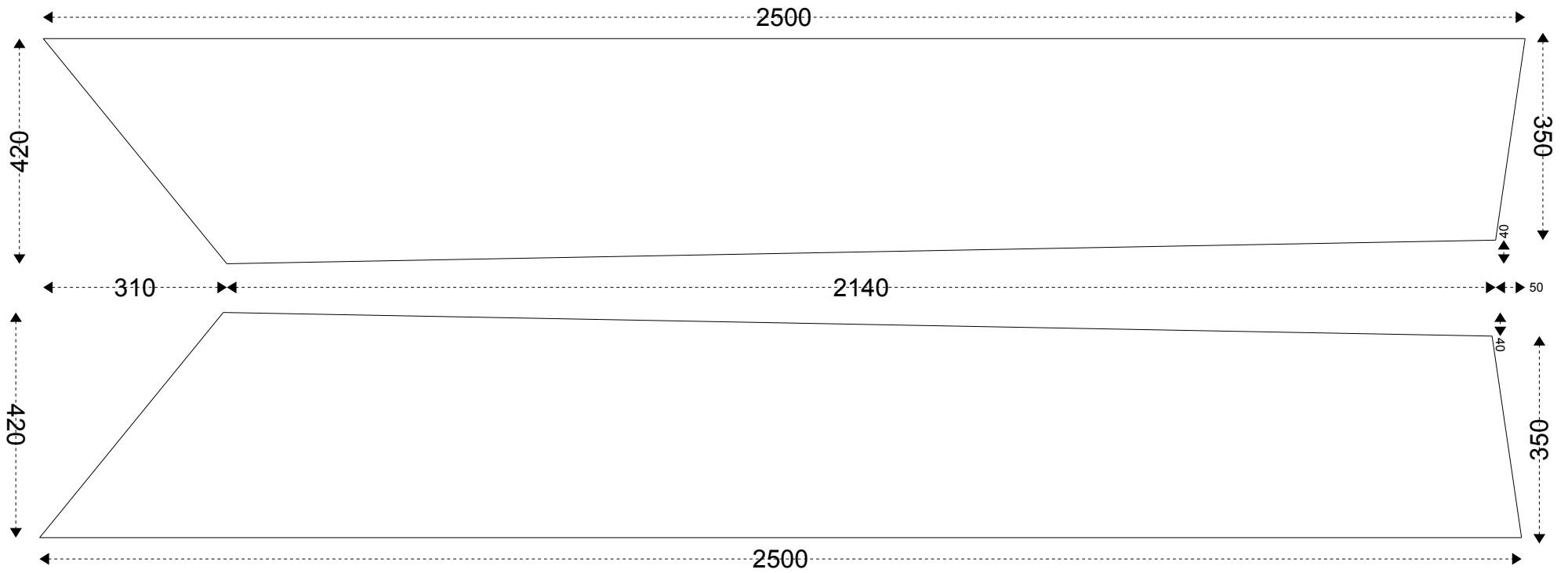
Lizenz:
Frei für den nicht kommerziellen Gebrauch.

Web: <http://weitwind.com>
Email: a@weitwind.com

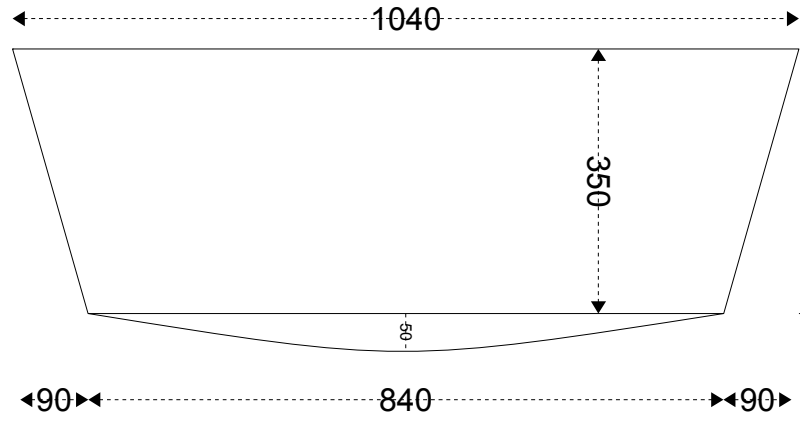
Wenn Sie das Boot bauen, würde ich mich über Fotos freuen! Bei Fragen bitte direkt in die Kommentarfunktion auf weitwind.com schreiben.

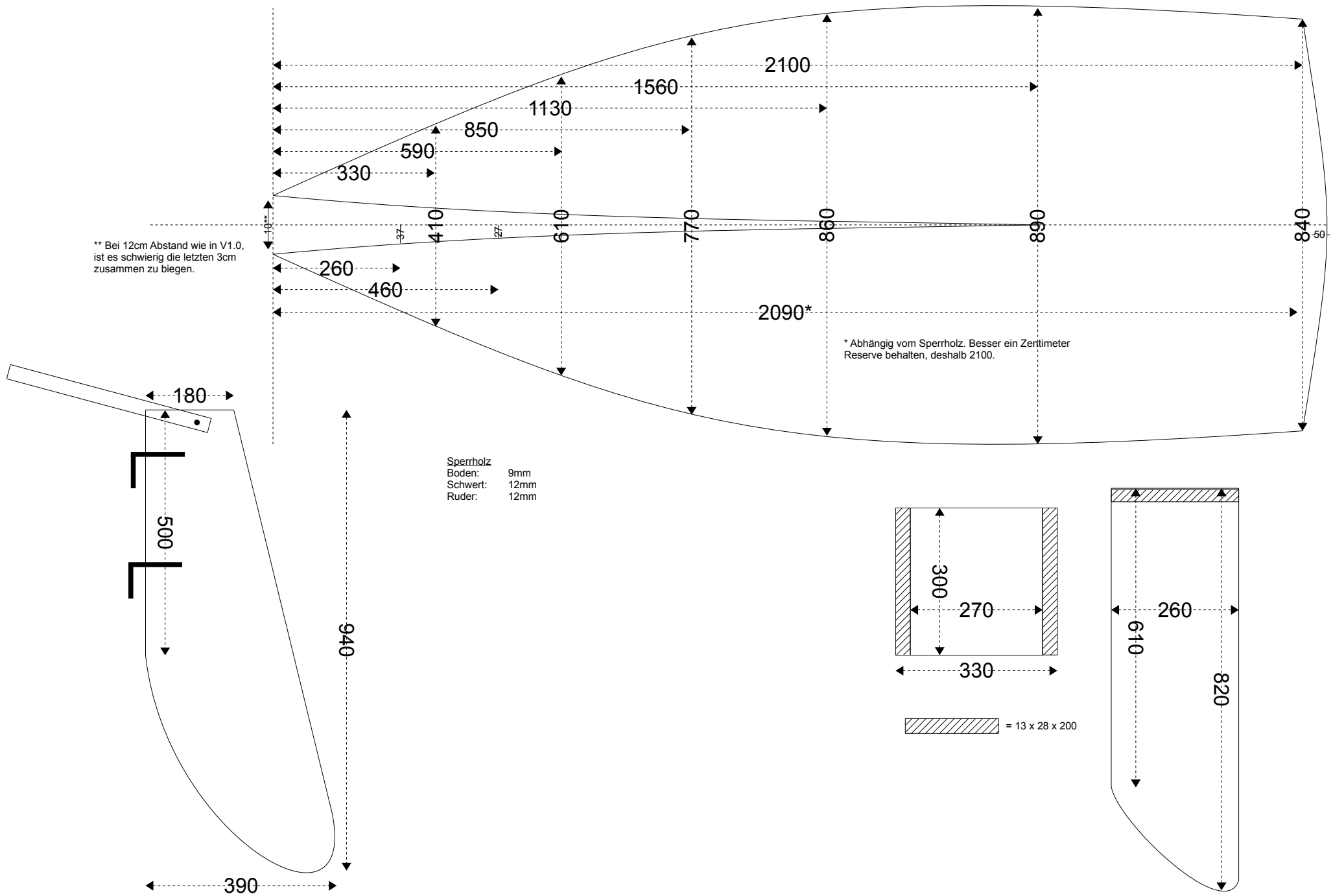
If you build the boat, i would be happy to see some photos! For questions please write a comment on weitwind.com.

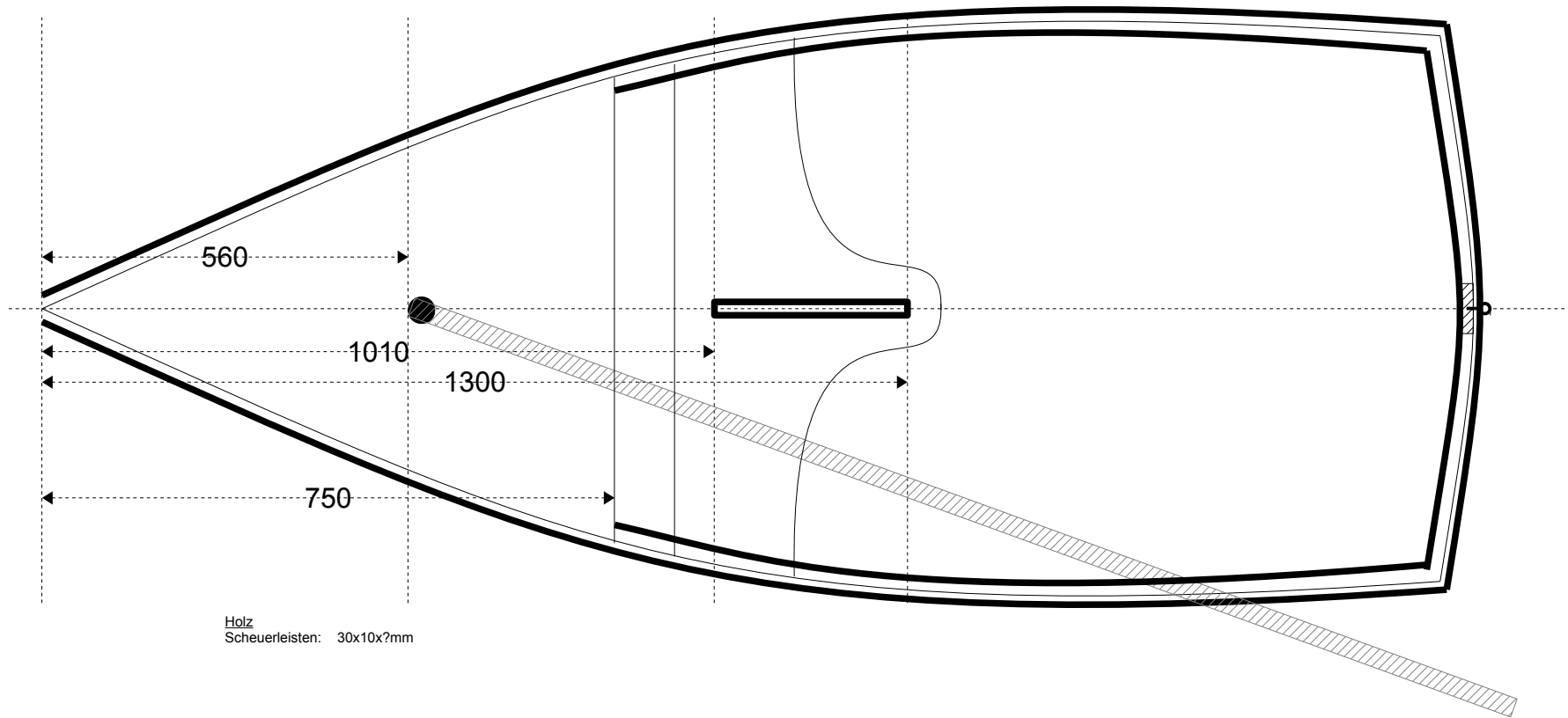




Sperrholz
 Seiten: 9mm
 Spiegel: 9mm







Rund-Hölzer

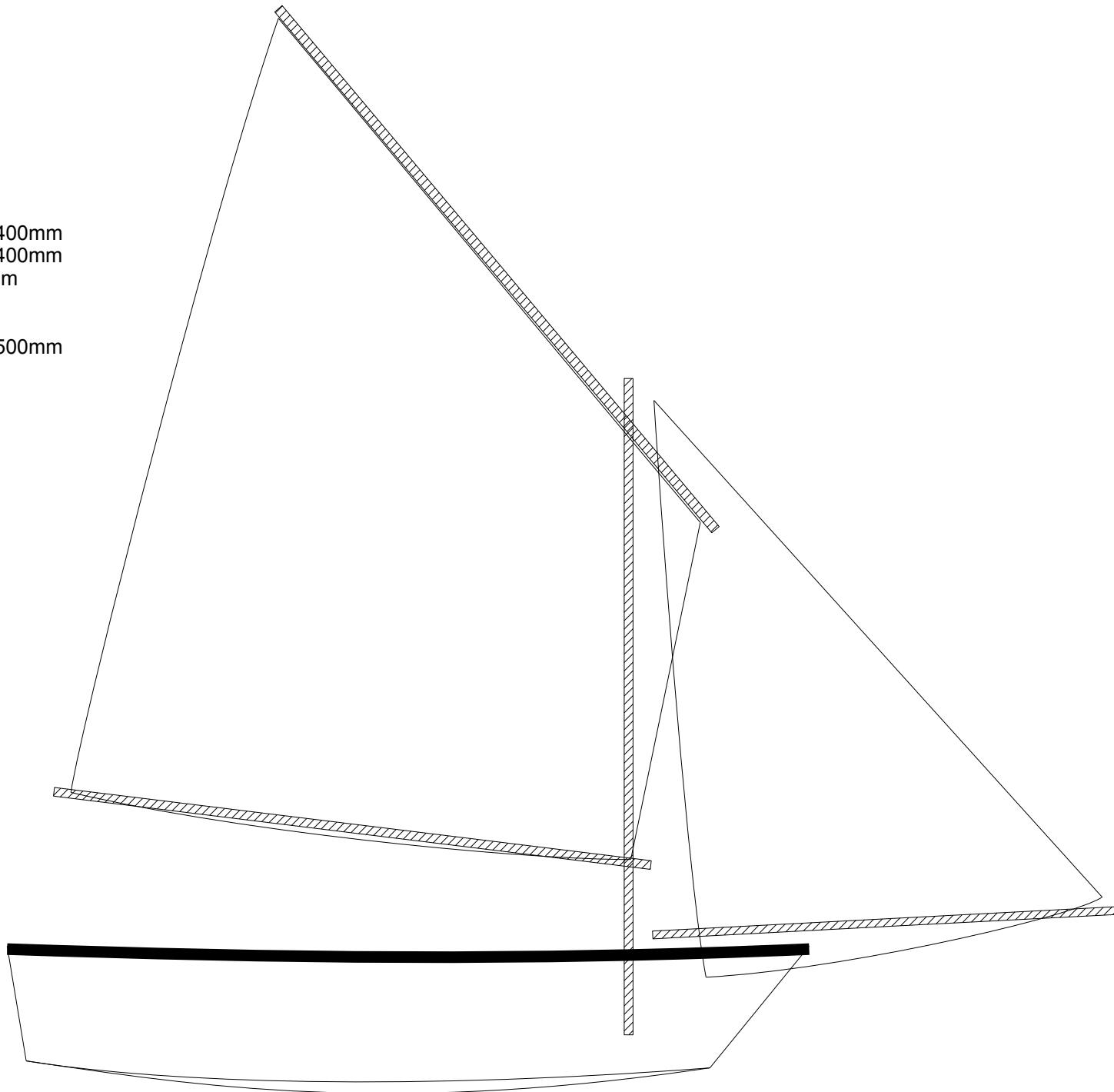
Mast: 50 x 50 x 2400mm

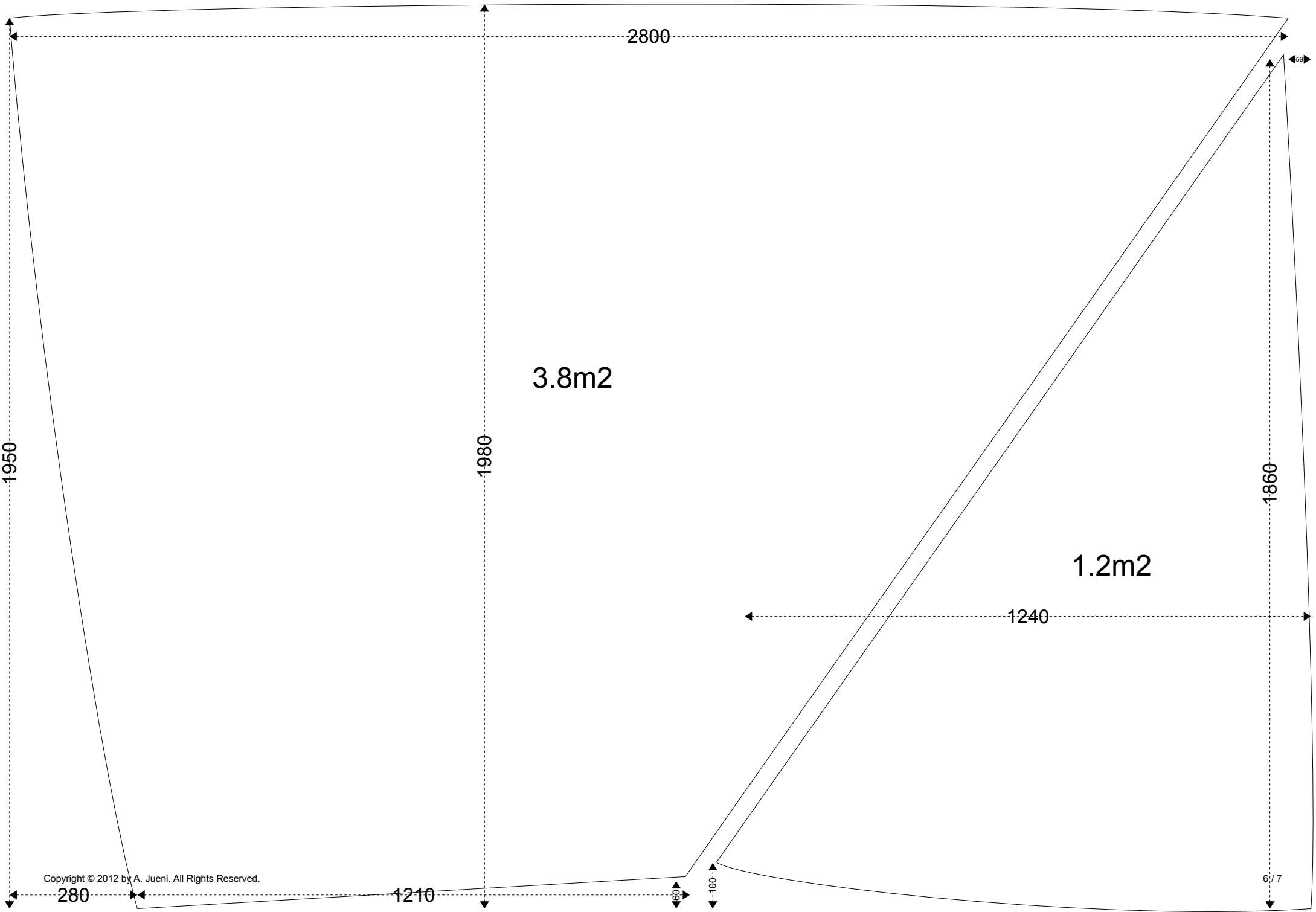
Baum Oben: 30 x 30 x 2400mm

Baum Unten: 30 x 2200mm

Vierkant-Hölzer

Baum Vorsegel: 30 x 30 x 1500mm





2800

1950

1980

3.8m²

1860

1.2m²

1240

Copyright © 2012 by A. Jueni. All Rights Reserved.

280

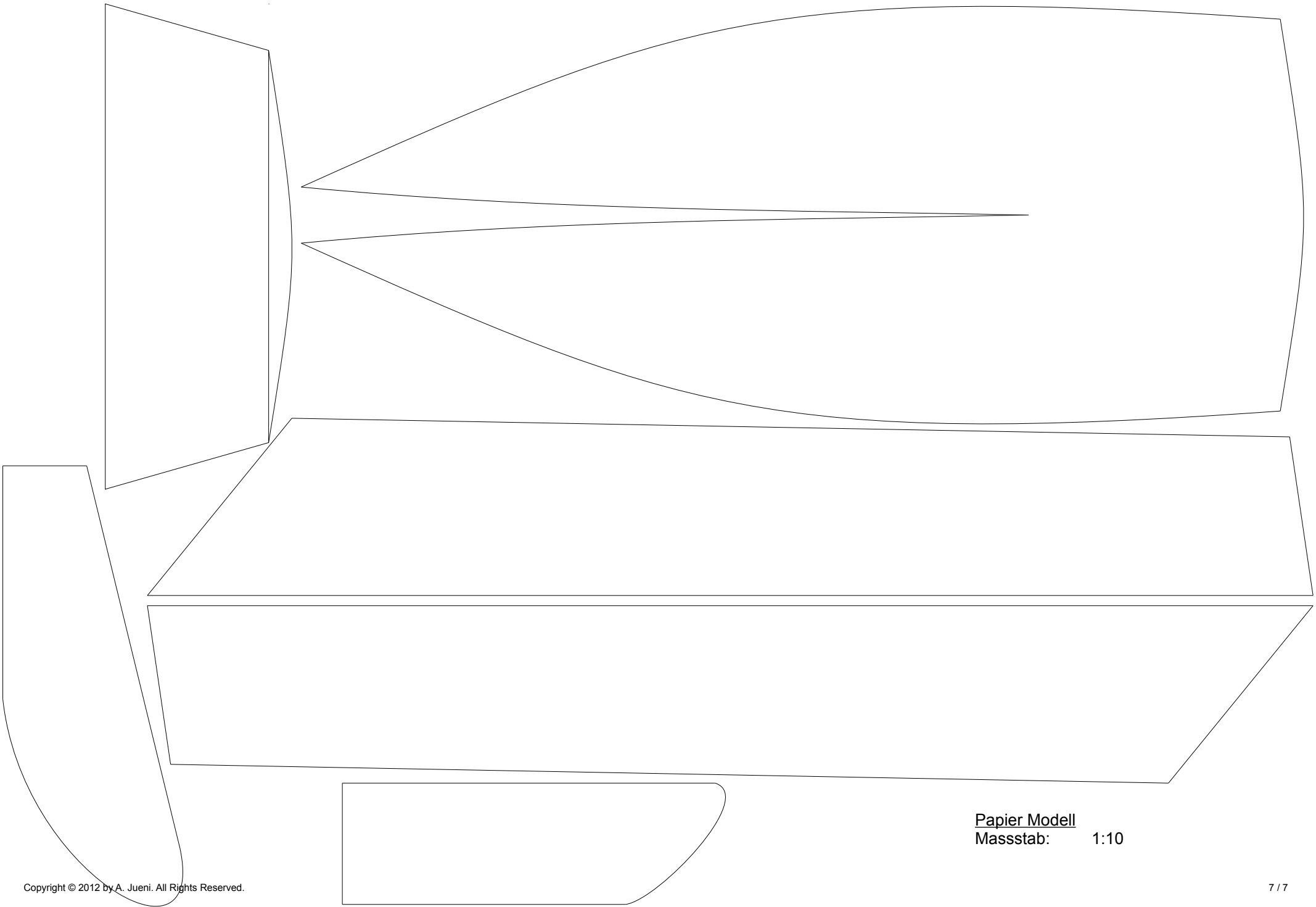
1210

60

100

6/7

60



Papier Modell
Massstab: 1:10